



THE HAWTHORNE AT NORTH FORK 2437.4

Finished SF: 2915
Total SF: 3198



NORTH FORK ELEVATION



HAWTHORNE HIGHLIGHTS

- 4-5 Bedrooms
- 3 Bathrooms
- 10' Ceilings on Main Level
- Formal Dining Room
- Main Floor Laundry Room



HIDDEN
BROOK

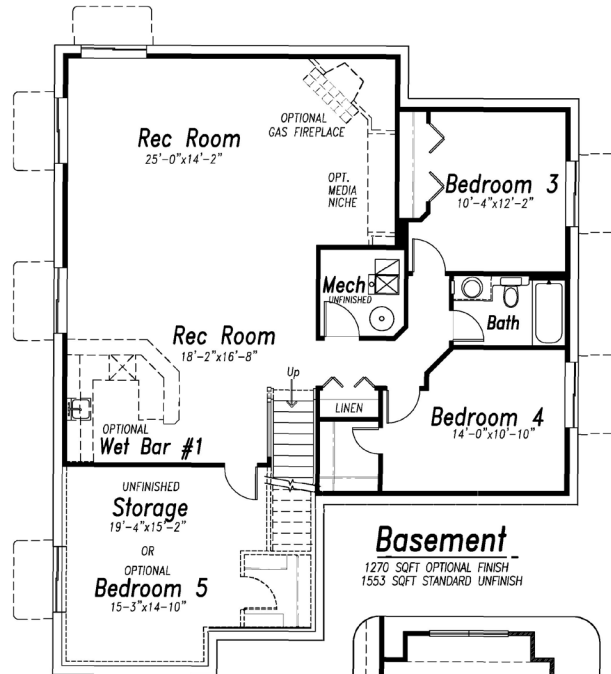
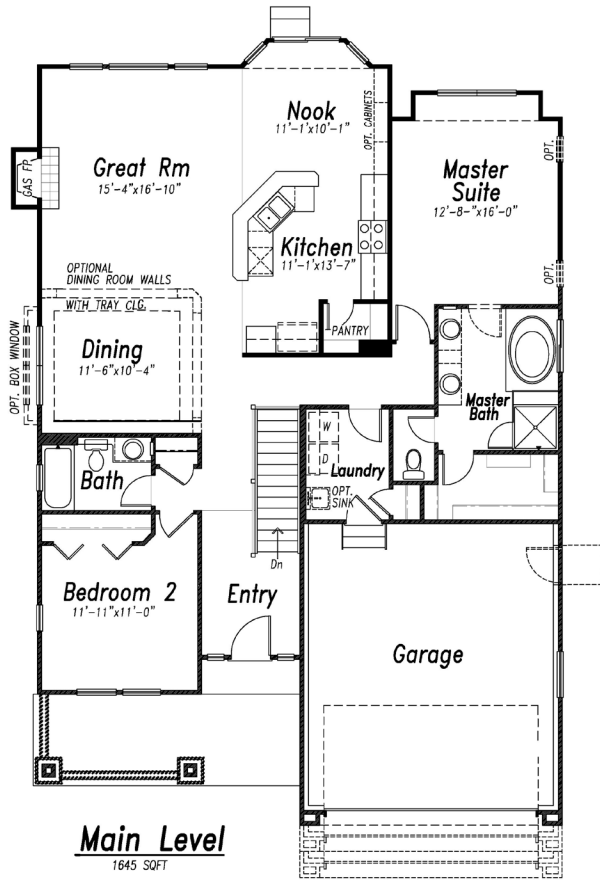
VIRTUAL TOUR

<http://tours.paulkohlman.com/public/vtour/display/165377>

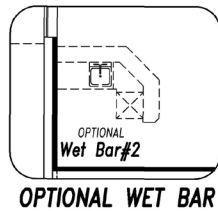
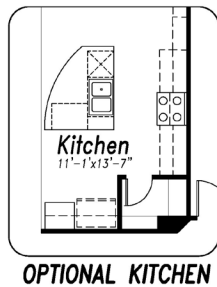
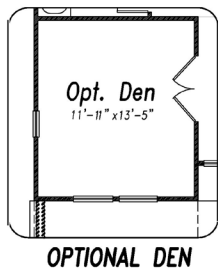
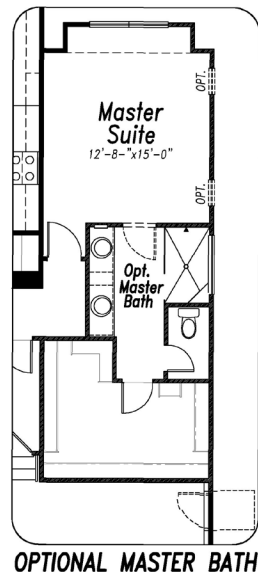
ALL HOME PLANS

<http://campbellhomes.com/home-plans/>





Basement
 1270 SQFT OPTIONAL FINISH
 1553 SQFT STANDARD UNFINISH



OPTIONAL MASTER BATH