

Finished SF: 3021

Total SF: 3176



OPTIONAL NORTH FORK ELEVATION



### KIPLING HIGHLIGHTS

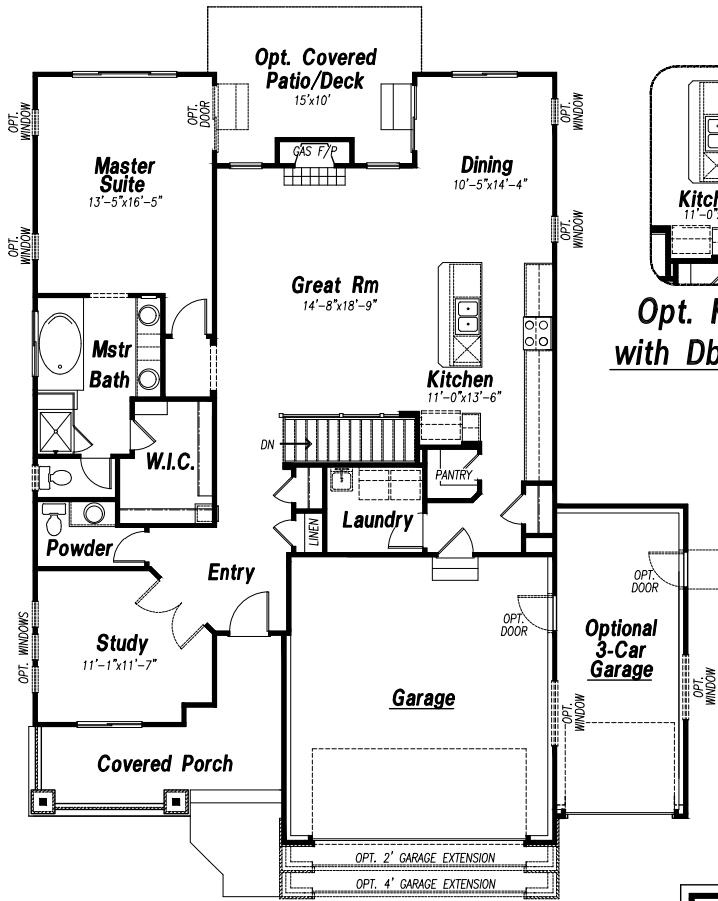
- 4-5 Bedrooms
- 2.5 Bathrooms
- Main Level Laundry Room
- Main Level Study
- Standard Front Porch
- Optional Covered Patio/Deck

### AVAILABLE IN

- Hidden Brook at North Fork
- Meridian Ranch
- Quail Brush Creek
- Village Center at Woodmoor

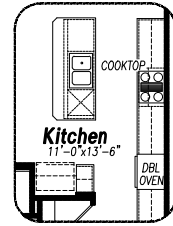
ALL HOME PLANS

<http://campbellhomes.com/home-plans/>

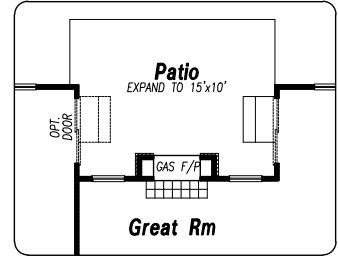


**Main Level Floor Plan**

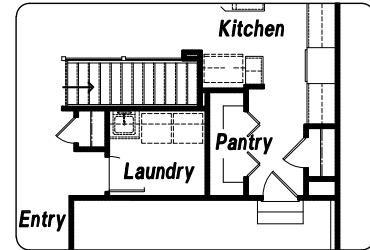
1588 SQ. FT.



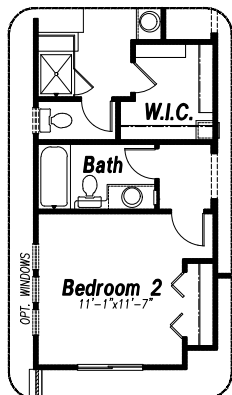
**Opt. Kitchen with Dbl. Ovens**



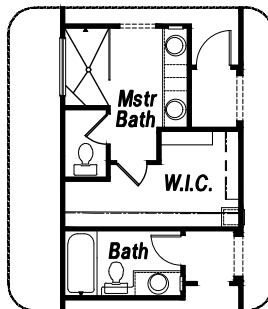
**Optional Great Room 2-Sided Fireplace**



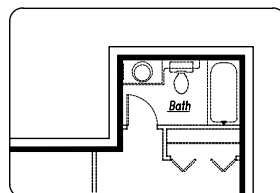
**Opt. Laundry & Exp. Pantry**



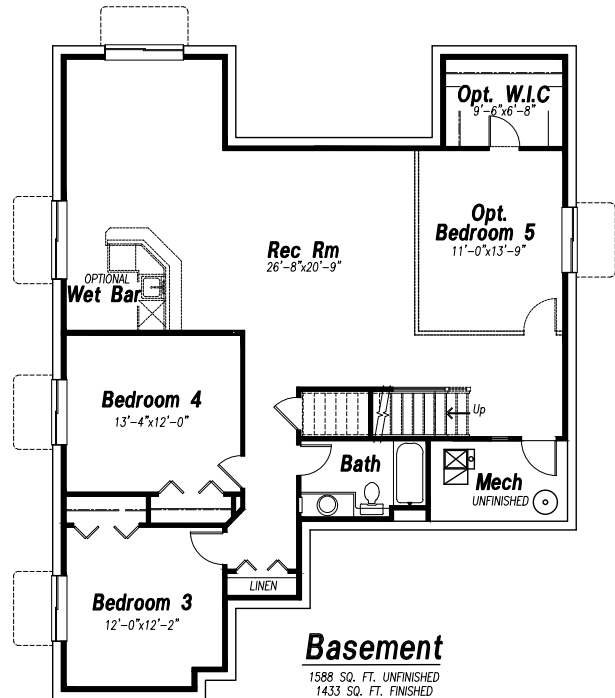
**Optional Bdrm 2 & Bath**



**Opt. Master Bath**



**Bdrm 5 Opt. Bath**



**Basement**

1588 SQ. FT. UNFINISHED  
 1433 SQ. FT. FINISHED