



Paint Brush Hills



9944 DEVONCOVE DRIVE

\$430,980



2,813 Sq. Ft



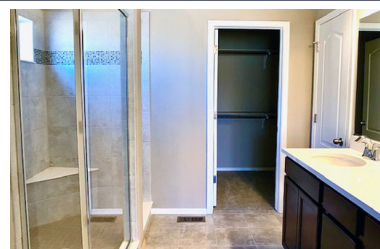
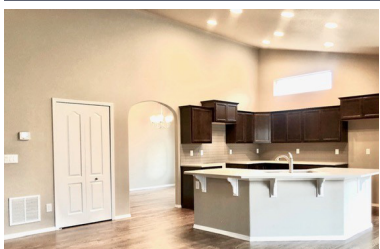
4 Bedrooms



3 Bathrooms



3 Car Garage



This Plum Creek floor plan in Paint Brush Hills has an open layout with lots of space for entertaining. Hardwood floors greet you at the entry and continue through the kitchen, dining area and great room. The gas fireplace with floor-to-ceiling stone facade creates an impressive focal point in the great room and the kitchen has a spacious island as well as pantry. On the main floor you'll find the master bedroom and one additional bedroom, plus the master bath and a full bath. The basement has an expansive rec room, two more bedrooms and another full bath. A 3-car garage, with 4' extension provides the right amount of space for vehicles, toys and tools.

