



MERIDIAN RANCH

A GOLF & RECREATIONAL COMMUNITY



12811 Ranch Gate Drive

\$699,030



3,176
Sq. Ft



4
Bedrooms



3
Bathrooms



Oversized
2-Car

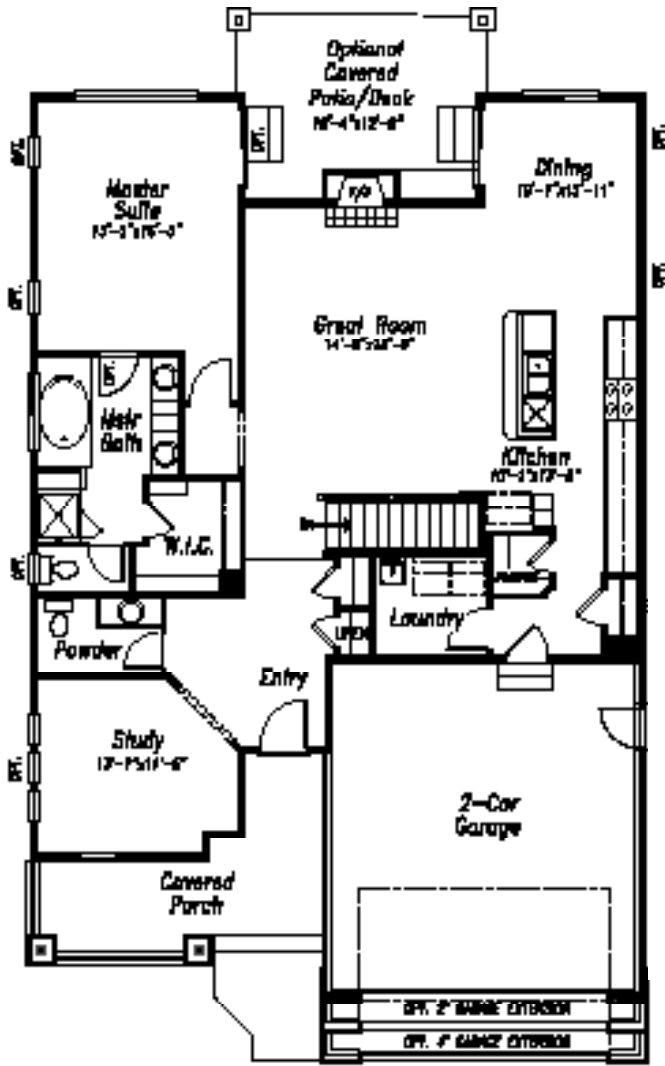


THE KIPLING | Build Complete and ready for move-in! This home has so many special features that make life a joy, you'll love coming home! The kitchen has built-in ovens, gas cooktop plus a large island. The great room has a see-through stone fireplace you can also enjoy on the 15'x10' covered deck. The open plan is spacious and inviting, and offers a second bedroom and bath on the main level along with the master suite. The finished basement has two additional bedrooms and a bath, along with a large rec room, complete with wet bar, and 9' foundation walls with a walk-out! Finally, the 2-car garage has 4' front extensions to fit larger vehicles or toys. This is one of our more popular plans for good reason, and this home has great amenities and options.

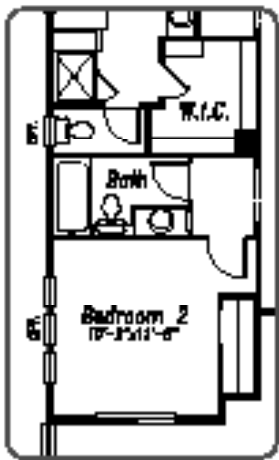
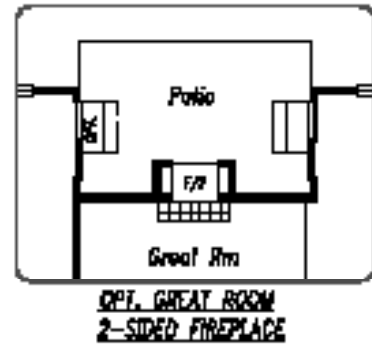
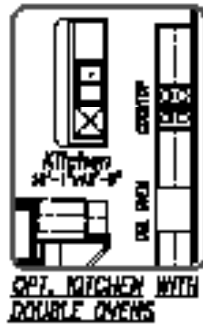


719-418-3969
meridianranch@campbellhomes.com

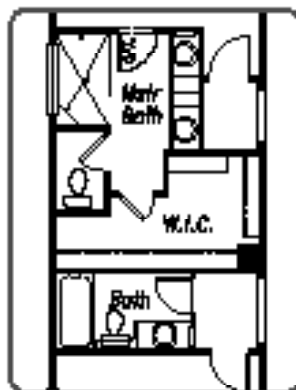




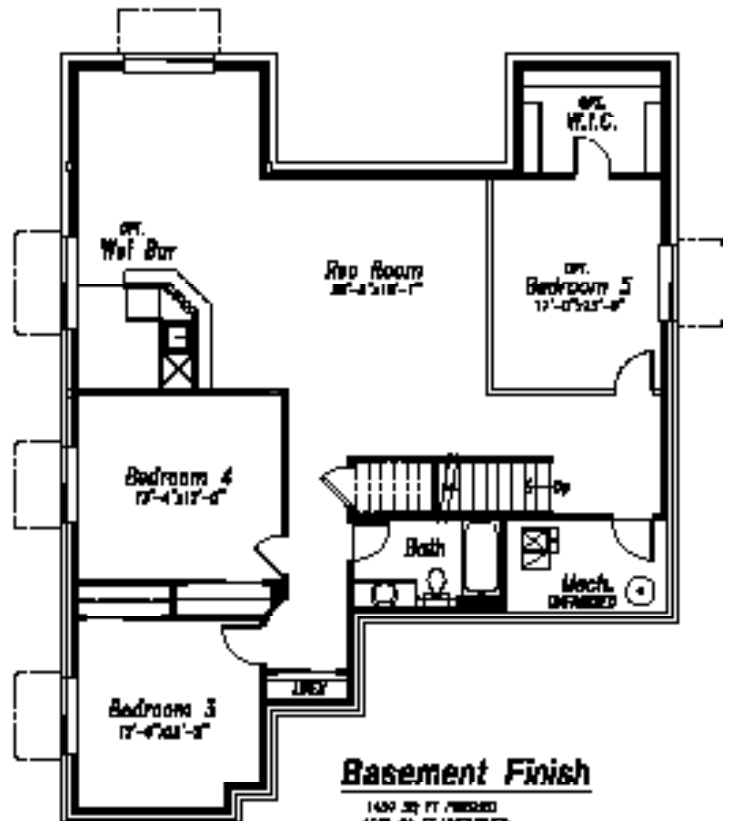
Main Level
1588 SF



OPT. BEDROOM 2 & FULL BATH



OPT. MASTER BATH



Basement Finish

1450 SQ. FT. FINISHED
568 SQ. FT. UNFINISHED