



MERIDIAN RANCH

A GOLF & RECREATIONAL COMMUNITY



10825 Evening Creek Drive

\$674,886



**3,825
Sq. Ft**



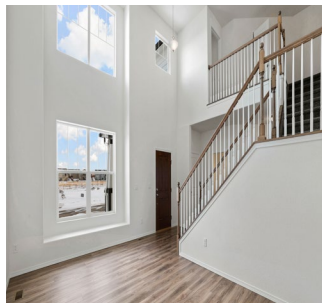
**6
Bedrooms**



**3.5
Bathrooms**



**3 Car
Garage**

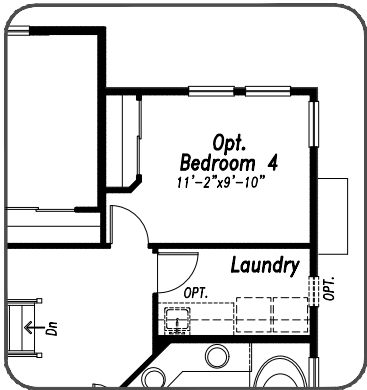
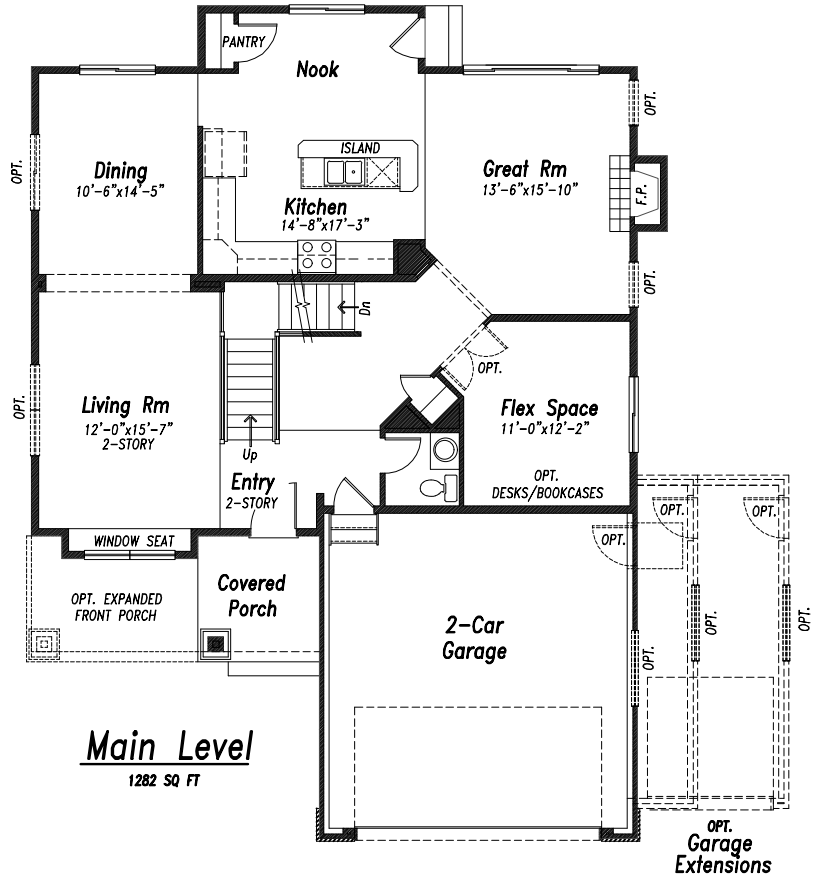
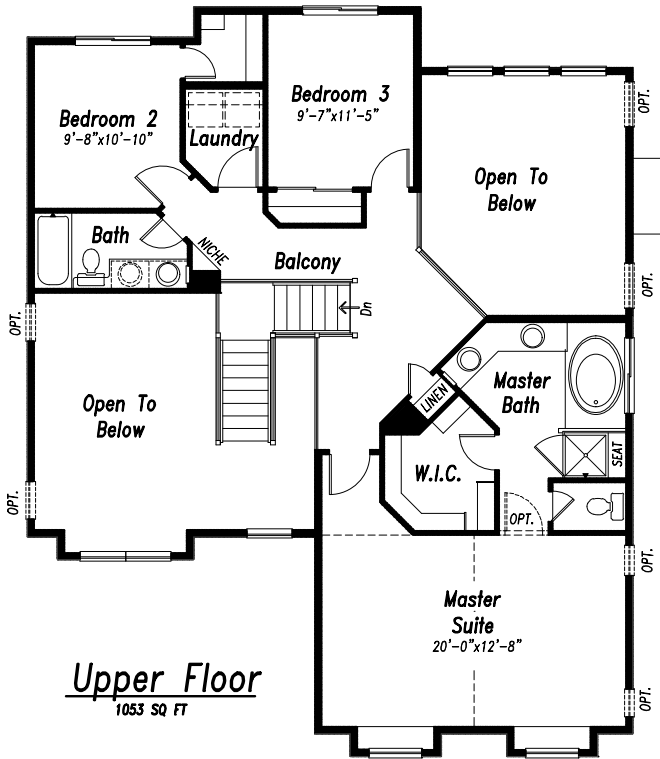


New Construction and Ready for Move-in! This beautiful six-bedroom home in Rolling Hills Ranch offers a fantastic floor plan with multiple living and dining areas, plus a study and a half bath all on the main level. The gourmet kitchen has double ovens and range top and is open to both the dining room and great room. On the upper level the master suite offers two walk-in closets along with a huge bedroom! The finished basement has 9' foundation walls giving it a nice, roomy feel. There's a spacious rec room for movie nights and plenty of room for a pool table or ping pong for game night. There's even a wet bar! A room for every reason! MLS #3531324

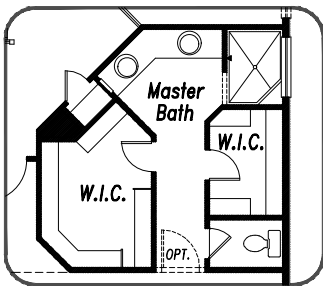


719-418-3969
meridianranch@campbellhomes.com

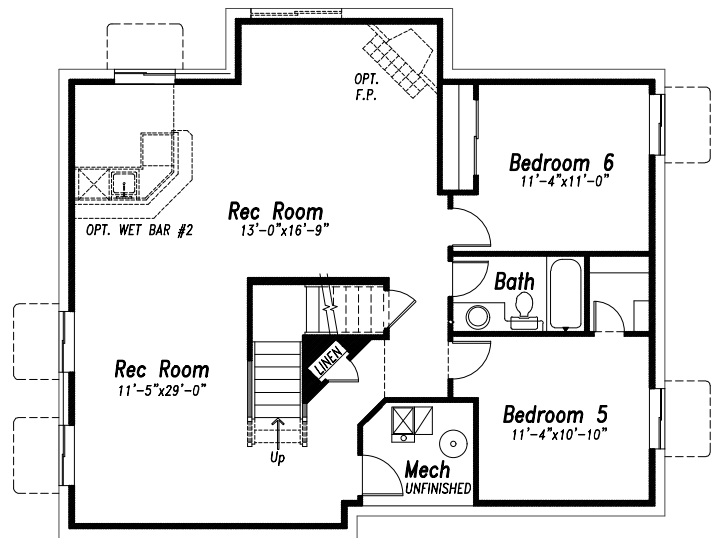




UPPER LEVEL OPT. BDRM. 4
ADDITIONAL 220 SQ FT



OPT. MASTER BATH



Basement Finish

1216 SQ FT FINISHED
1270 SQ FT UNFINISHED