



10604 Derby Mesa Court

\$738,404



3,176 Sq. Ft

4 Bedrooms

3 Bathrooms

3 Car Garage

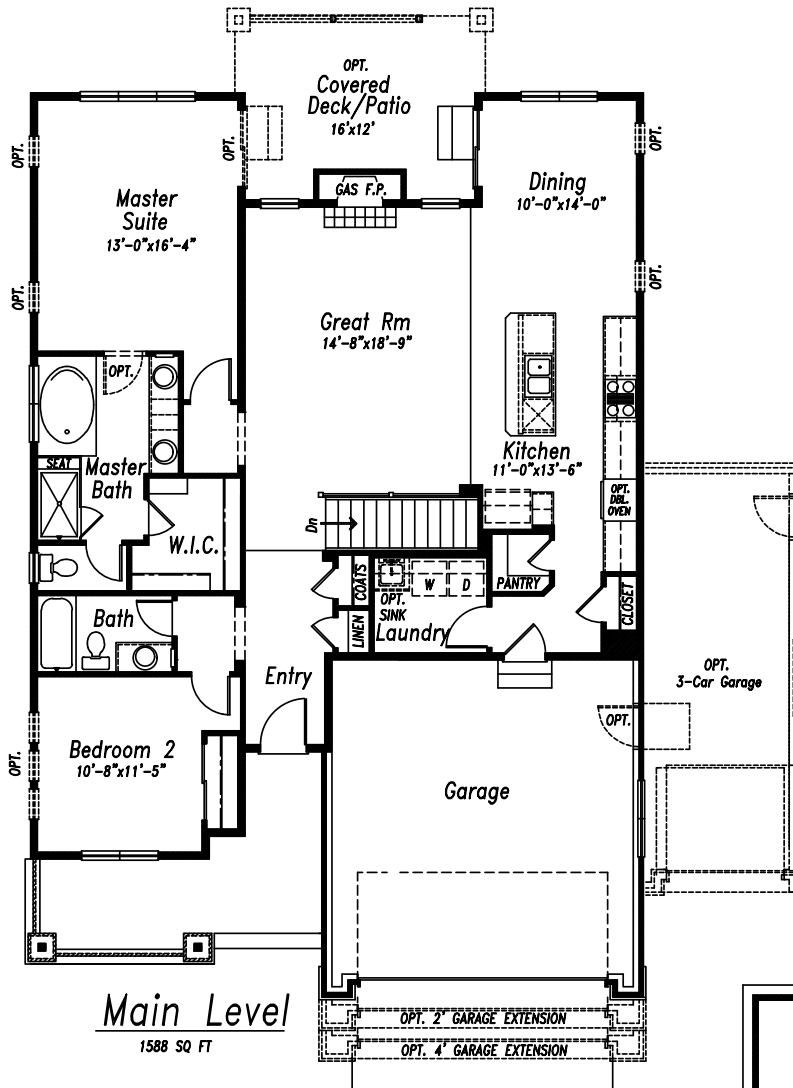


Available in June! Located on a corner lot with mountain views, this home defines comfort and style. The luxury vinyl plank flooring on the main living areas really brings the open layout together. The open plan has a gourmet kitchen with expanded pantry, KitchenAid appliance package with built in oven and microwave, 36" gas cooktop, vent hood to the outside, and upgraded dishwasher. The island provides extra seating and prep space and sightlines to the great room, which has a gas stone fireplace. The dining area is also open to the kitchen and great room and provides access to the covered rear patio. Also on the main level is the primary suite with upgrades to include a spacious curbless shower and expanded walk-in closet. There is an additional bedroom on this level, as well as a full bath. The finished basement has 9' foundation walls, giving it a nice open feel. This level has two bedrooms, a full bath, a very large rec room to accommodate movie nights, game tables, or a home schoolspace. *The Kirkland Plan, MLS #4081291* NOTE: Photos are representative of the plan and not this specific home.

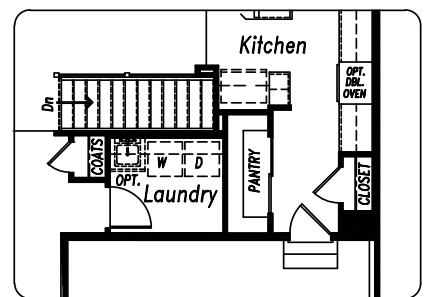


719-434-7251
cordera@campbellhomes.com

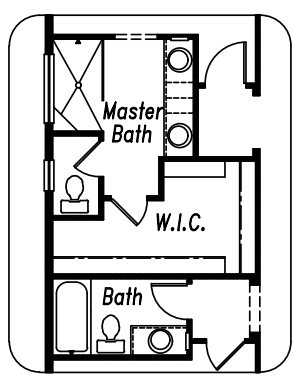




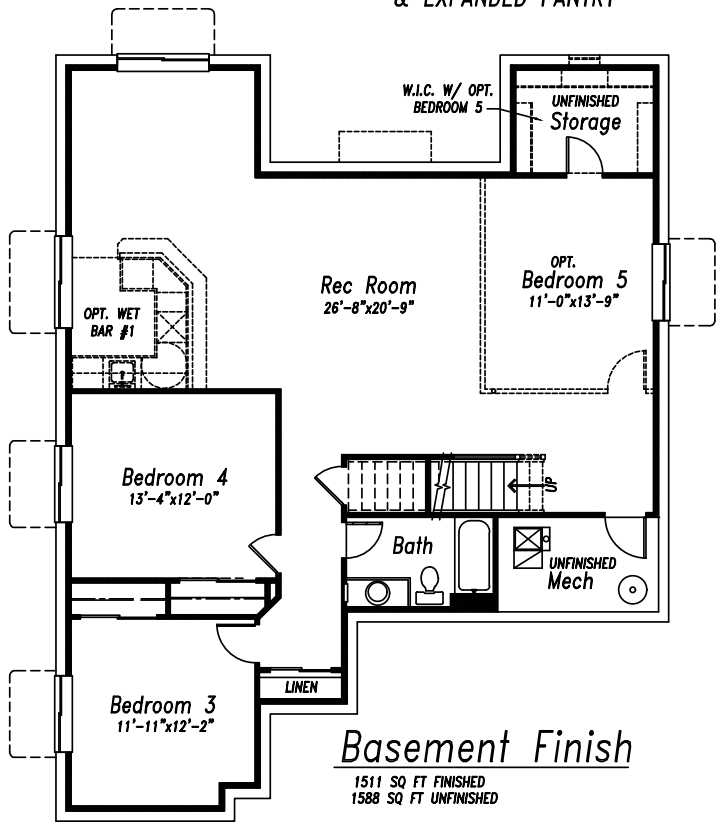
Main Level
1588 SQ FT



OPT. LAUNDRY & EXPANDED PANTRY



OPT. MASTER BATH



Basement Finish

1511 SQ FT FINISHED
1588 SQ FT UNFINISHED