



MERIDIAN RANCH

A GOLF & RECREATIONAL COMMUNITY



12603 Enclave Scenic Drive

\$897,026



3,757
Sq. Ft



6 Bedrooms
Multi-suite



4
Bathrooms

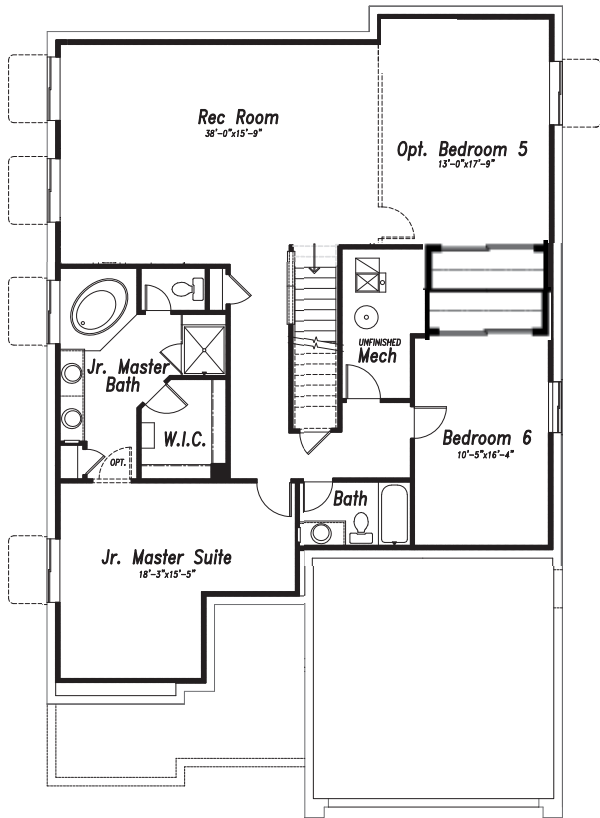


3-Car
Garage



Location, location, location! This home backs to open space, has golf course and mountain views, and is on a cul-de-sac. Hop on your golf cart and easily head to the pro shop. Then when you are back home, enjoy the open plan with gourmet kitchen and the double sided fireplace that can be enjoyed from the great room or from the 39x10 partially covered deck. Another bonus - this home has **two master suites with luxury 5-piece baths**, one on main level and one in finished basement. The walk-out basement has 9' foundation walls and has easy access to the 49x15 concrete patio, which is partially covered and is another great place to enjoy the views! This home has many extra features, such as an installed gas line on the deck for BBQs or a fire pit, a reinforced area of the deck and pre-wiring to accommodate a future hot tub, air conditioning and much more! [The Emerson Plan, MLS #2354287](#)

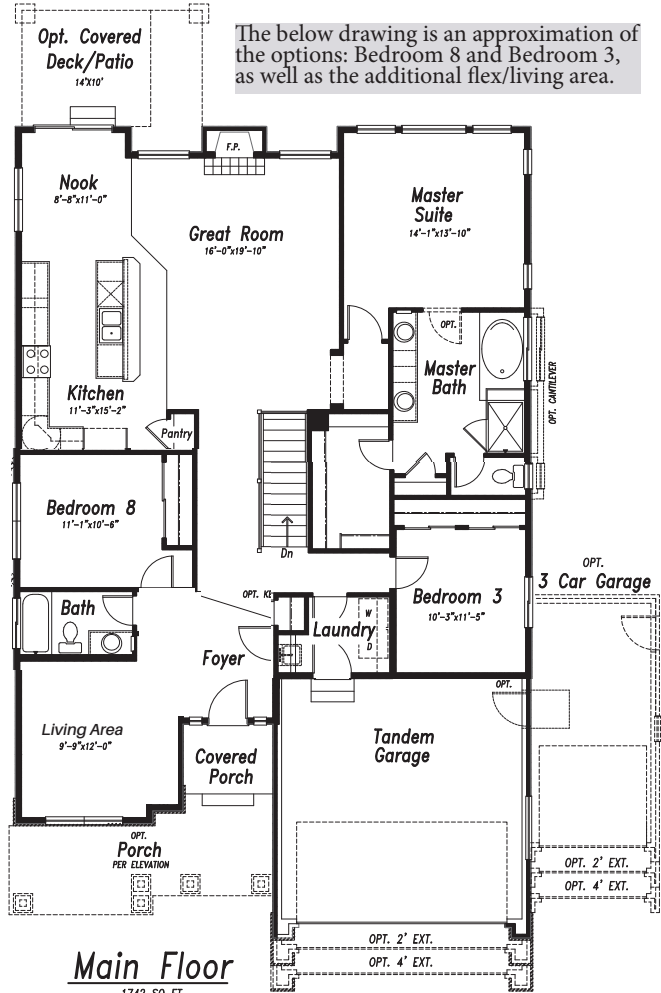
The below drawing is an approximation of the options: Junior master suite, bedroom 6, and bedroom 5.



Basement Finish

1507 SQ FT FINISHED
 1711 SQ FT UNFINISHED
 SEE BELOW W/ ADDED OPTS.
 + 277 SQ FT BEDROOM 6
 + 80 SQ FT JR. MASTER SUITE

The below drawing is an approximation of the options: Bedroom 8 and Bedroom 3, as well as the additional flex/living area.



Main Floor

1742 SQ FT

View from the expansive deck

