

Jackson C.R.E.E.K North



366 Hardstone Drive

\$977,335

0.39
Acre
Lot



 3,506
Sq. Ft

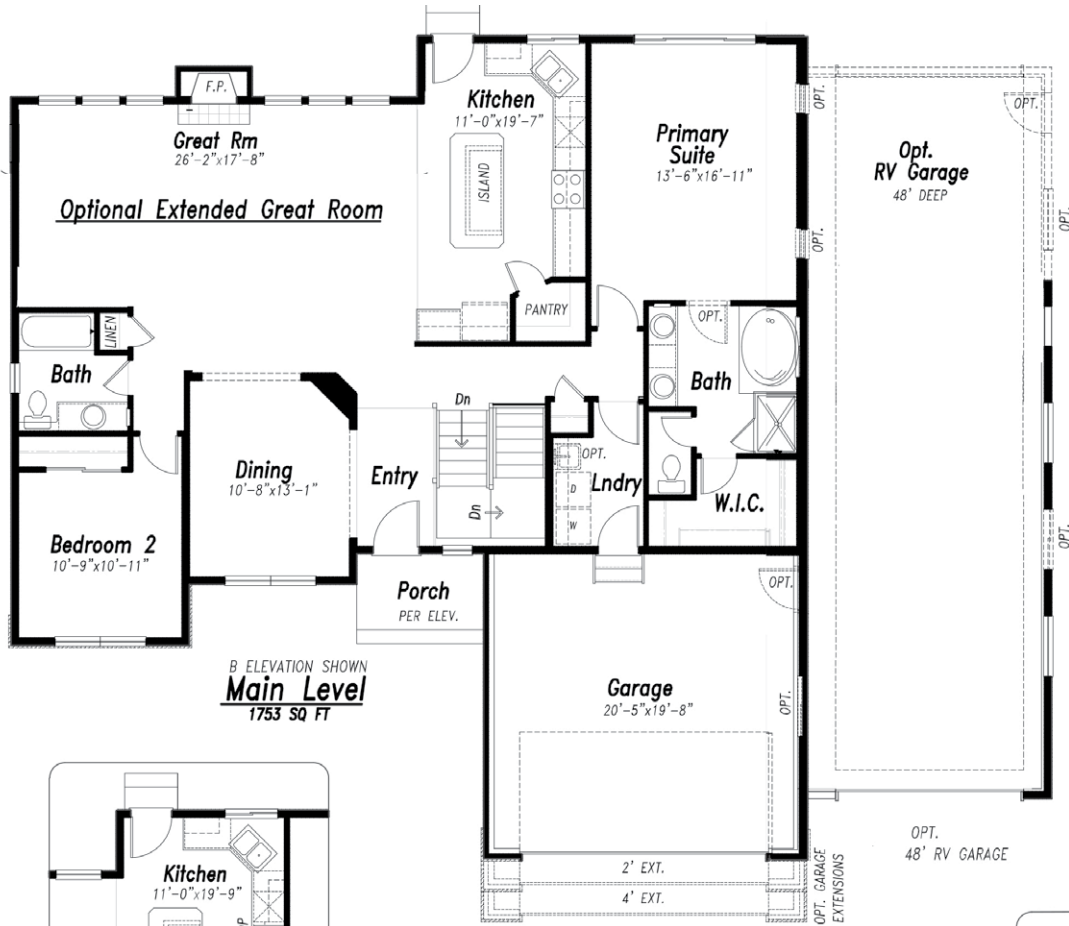
 4
Beds

 3
Baths

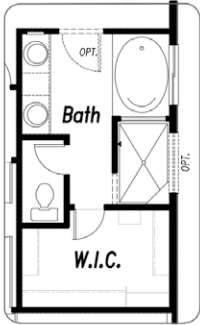
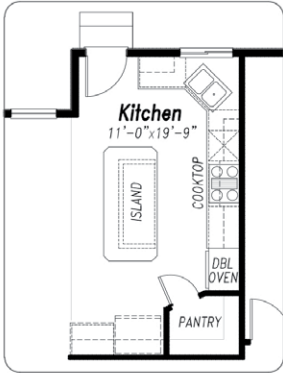
 2 Car +
48' RV
Gar.



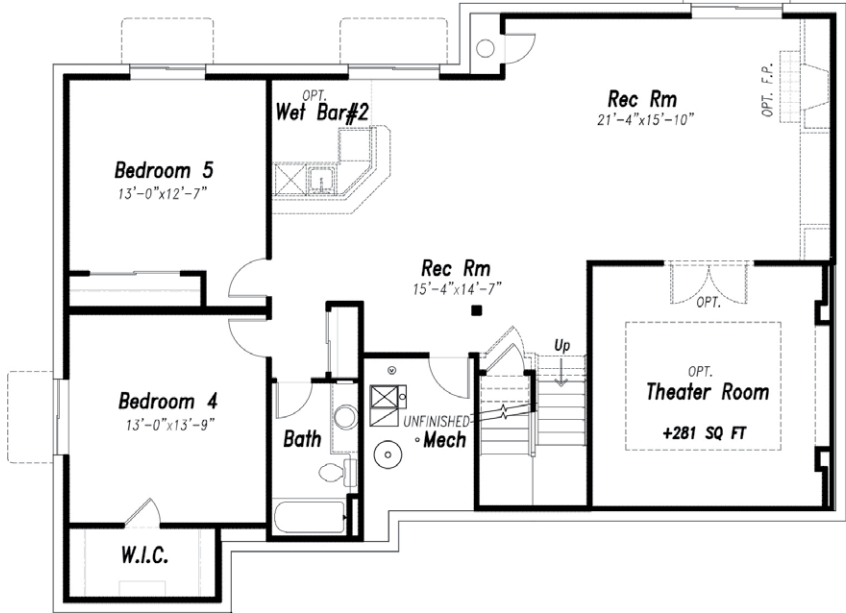
Luxurious home on over a 1/3-acre in Monument with an RV garage! This spacious home is situated on a corner lot with mountain views and offers an open plan that invites conversation. The wall of windows on each side of the gas fireplace bathes the room in abundant natural light. The kitchen will delight any chef with a slide in commercial-style gas range, built in oven and microwave combo, and quiet-rated dishwasher. The walk-in pantry is an added bonus, along with a spacious island for prep space or quick meals. The open plan is perfect for entertaining and offers the expanded great room to accommodate plenty of seating or a breakfast table. The formal dining area has ample space for an 8-person table as well. The master suite is an oasis with a free-standing 60x32 tub. The finished basement has 9' foundation walls, a wet bar, and a large rec room for games and a theater room for movie nights! This home has a 2-car garage with 4' front extensions to accommodate longer vehicles plus a 48' deep RV Garage! Located convenient to I-25 for fast commutes. *Photos are of the plan and not the specific home.*



B ELEVATION SHOWN
Main Level
1753 SQ FT



Optional Primary Bath & Walk-In Closet



Basement Finish
1361 SQ FT FINISHED
1753 SQ FT UNFINISHED