

\$60,000
IN BUYER CREDITS!
FIXED RATE
AS LOW AS 5.125%
ASK FOR DETAILS

10137 Emerald Lake Lane

\$880,597



3,726
Sq. Ft



4
Bedrooms



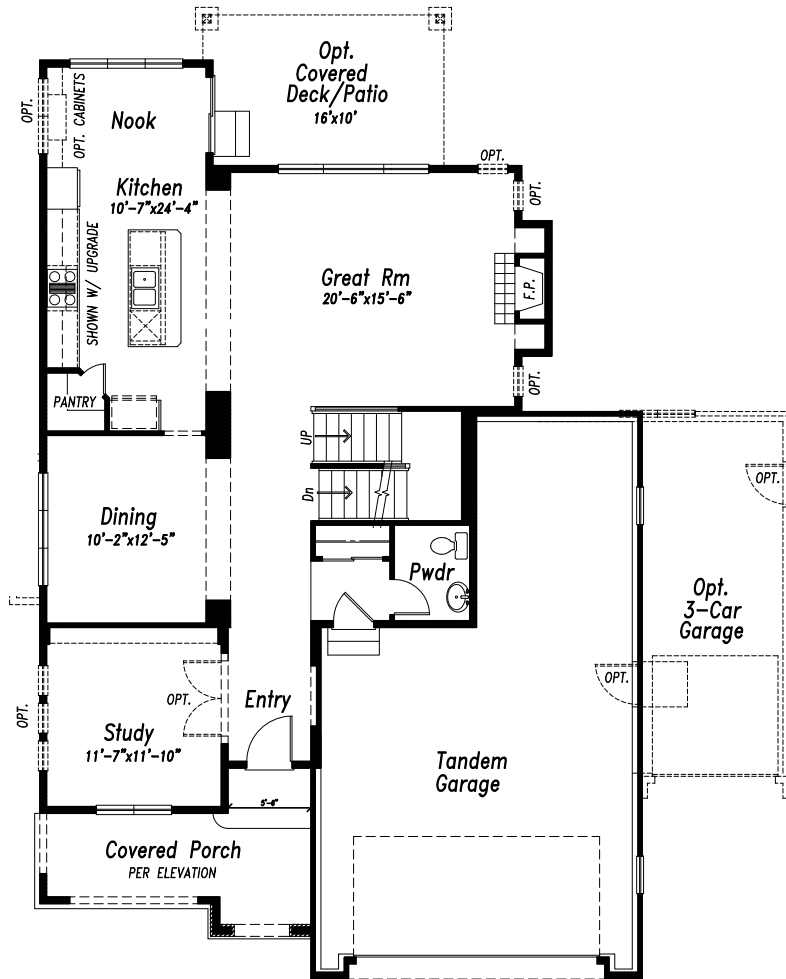
3.5
Bathrooms



3 + Tandem
Car Garage

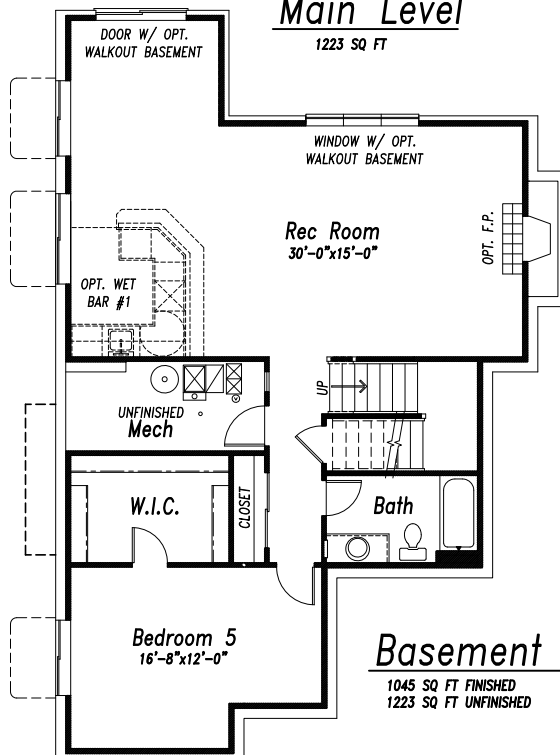


Mountain Views and Luxurious Living! The chef's kitchen is equipped with a 36" commercial-style gas range, combo oven and microwave built-in, and silent-rated dishwasher, plus under-cabinet lighting, walk-in pantry and a large island. The breakfast nook easily accommodates casual meals and has quick access to the covered patio with installed gas line to make grilling a breeze. The great room has abundant natural light and a stacked stone gas fireplace for cooler days. A separate dining area is perfect for larger meals. Off the entry is a study with French doors. The primary suite on the upper level features a 5-piece bath and dual closets. The pièce de résistance is the cozy sitting area with coffee/wine bar and glass doors to the covered balcony with mountain views. The finished basement has 9' foundation walls, a large bedroom and full bath and a 30x15 rec room with wine bar that is perfect for game or movie nights. This home has a 3-car garage, plus a tandem space that can accommodate a small car, motorcycles, tools or toys. *Thoreau Plan. #2220220. Use a portion of this \$60k promotion to buy down your interest rate as low as 5.125%. campbellhomes.com/low-rates*



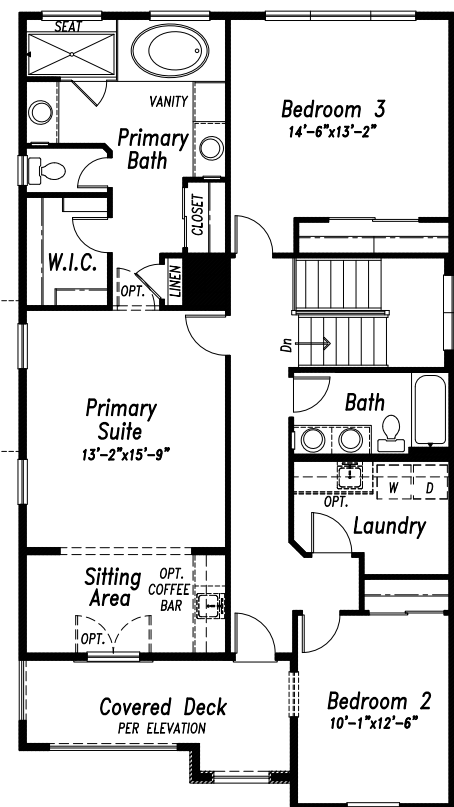
Main Level

1223 SQ FT



Basement Finish

1045 SQ FT FINISHED
1223 SQ FT UNFINISHED



Upper Level

1280 SQ FT

