



4.375%
FIXED
Interest
Rate*

10151 Waterton Canyon Way

\$853,075

READY
NOW!



3,176
Sq. Ft



4
Bedrooms



3
Bathrooms



3
Car Garage



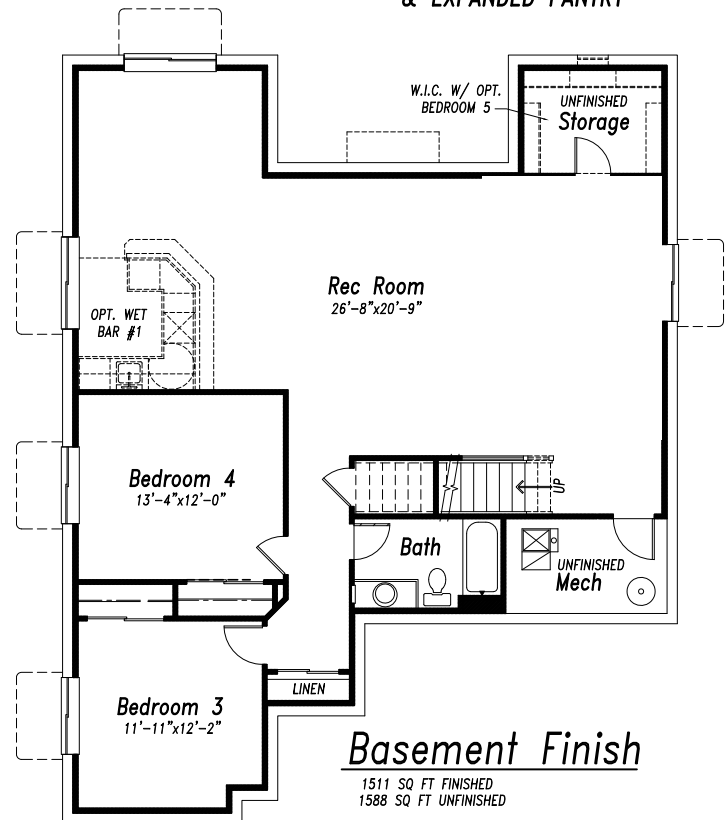
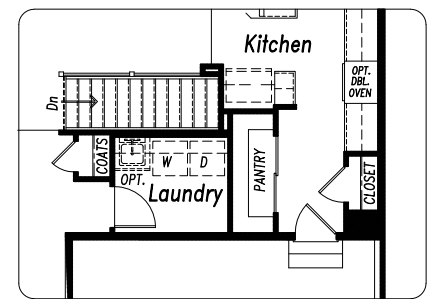
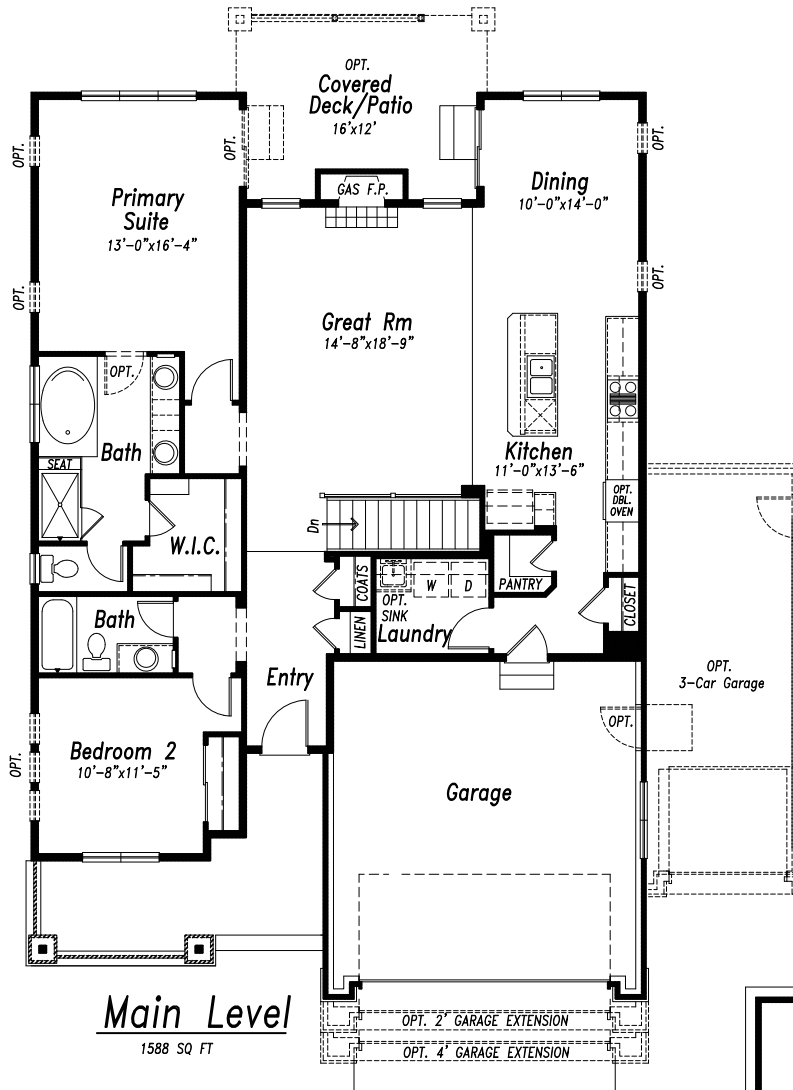
A plan favorite for good reason! The openness of the great room, kitchen and dining area makes this a welcome gathering place, complemented by the floor-to-ceiling stacked stone gas fireplace in the great room creating an alluring focal point. The kitchen is a chef's dream with a 36" commercial gas range, plus wall oven/microwave combo. Beautiful wrought iron stair spindles, quartz countertops, pendant lighting, stainless-steel KitchenAid refrigerator, under-cabinet lighting, and 8' interior doors on the main level add to the many desirable finishes and features in this home. The primary bedroom adjoins a luxurious bath with a large soaking tub, walk-in shower, and double vanity with quartz counter tops. The basement has generous 9' foundation walls giving it an expansive and open feel and includes a rec room with custom wine bar that's perfect for game nights. The covered back patio is a great all-weather retreat and has an installed gas line to make grilling a breeze! With the oversized 3-car garage there's abundant space for trucks, tools and toys. [The Kirkland Plan, MLS #4965917](#)

*Must contract by 1/31/26. Some restrictions apply. Visit campbellhomes.com/low-rates for other details.



719-434-7251
cordera@campbellhomes.com





Take a virtual tour at
<https://campbellhomes.com/moveinready/10151-waterton-canyon-way/>