



MERIDIAN RANCH

A GOLF & RECREATIONAL COMMUNITY



Enjoy
\$20,000
in Flex
Cash*

13044 Highland Crest Drive

\$894,849



4,001
Sq. Ft



5
Bedrooms



3.5
Bathrooms



2-Car + RV/
Toy Garage



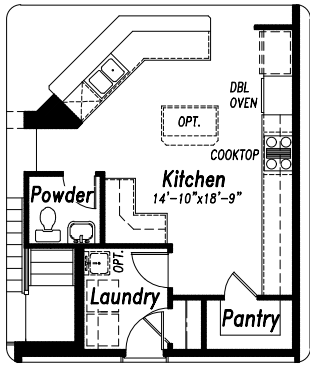
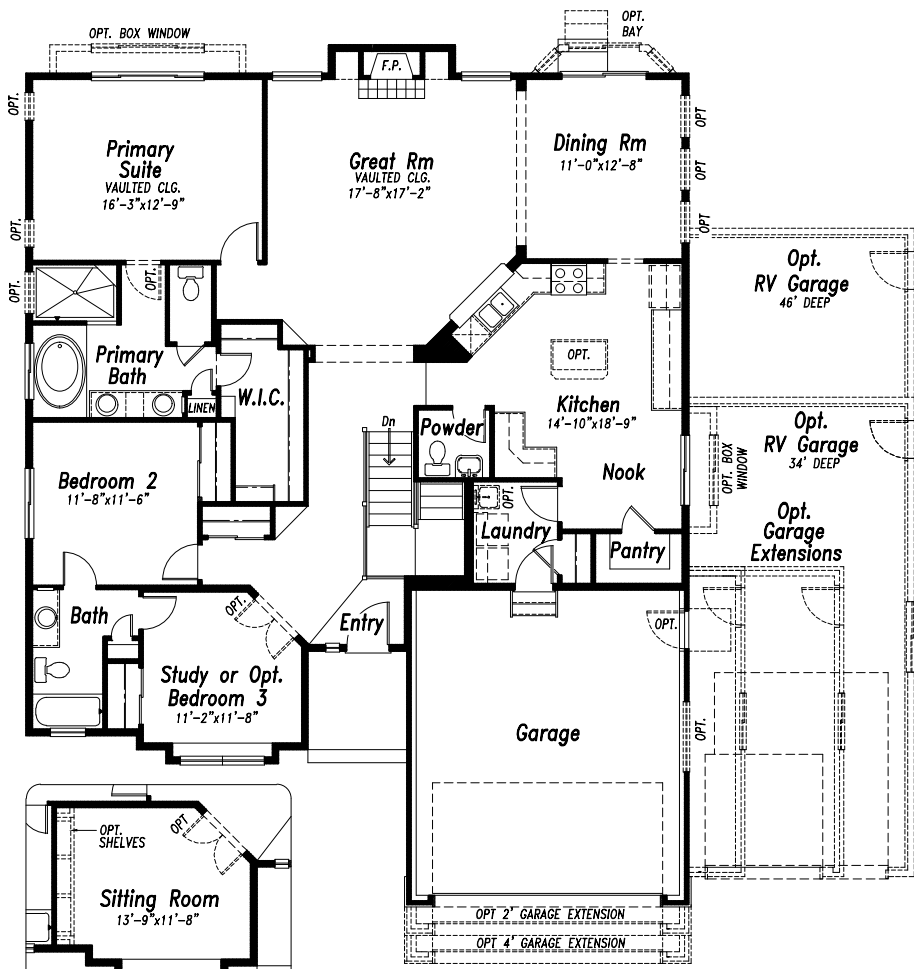
Designed for Living. Built for Entertaining. Experience a home that perfectly balances elegance with an active lifestyle. At its heart lies a **chef's dream kitchen**, featuring a 30" gas cooktop, double ovens, and expansive prep space. The seamless open-concept flow is anchored by durable yet refined plank flooring and a cozy fireplace, creating an inviting atmosphere for any gathering.

The lower level is a true destination, boasting **9' finished ceilings**, a custom wet bar, and a dedicated theater room—ideal for game days or cinema nights. Outside, the **spacious covered patio with a built-in gas line** awaits your next BBQ. Finally, the massive **46' RV/Toy Garage** provides the ultimate sanctuary for your campers, boats, or workshop projects. *The Raintree Plan.* Note: Photos are of the plan and not the specific property. *Flex cash requires use of preferred lender if financing. Estimated completion: June 2026.



719-418-3969
meridianranch@campbellhomes.com

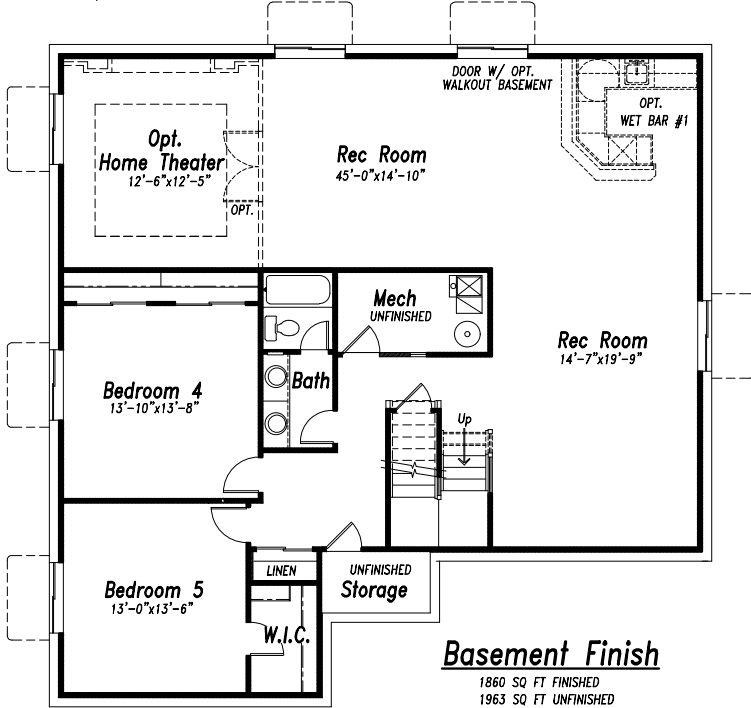




OPT. SITTING ROOM

Main Level
1993 SQFT

OPT. OPEN KITCHEN WITH OPT. DOUBLE OVEN LAYOUT



Basement Finish
1860 SQ FT FINISHED
1963 SQ FT UNFINISHED