

CORDERA[®]
The rest is up to you.



Enjoy
\$32,500
in Flex
Cash*

10151 Waterton Canyon Way

\$849,275



3,176
Sq. Ft



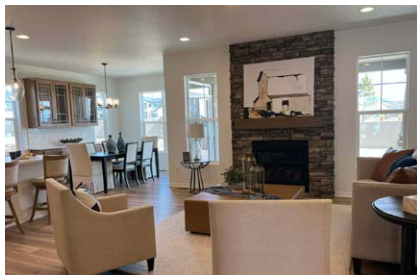
4
Bedrooms



3
Bathrooms



3
Car Garage



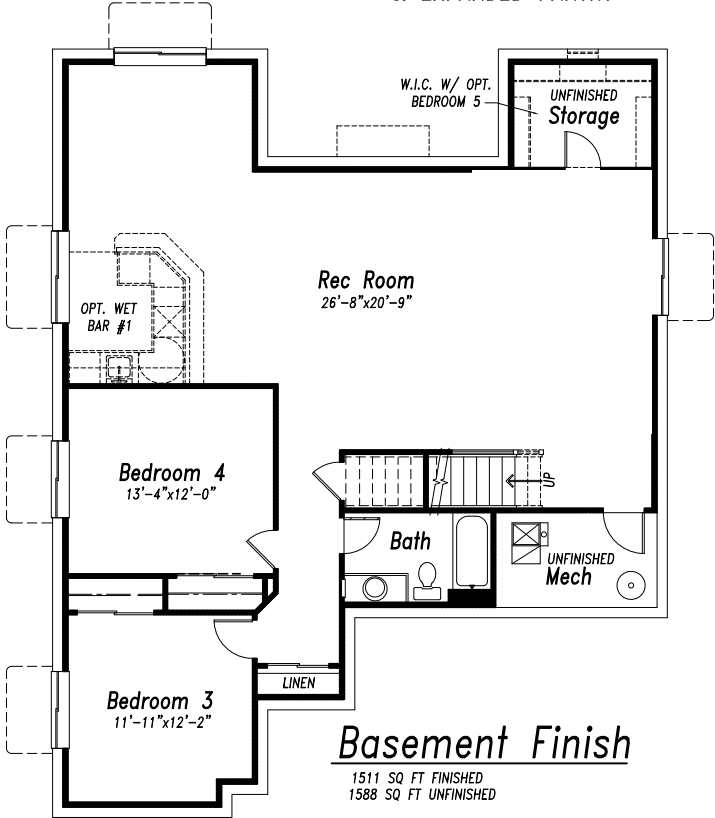
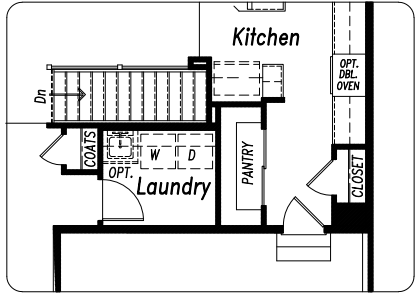
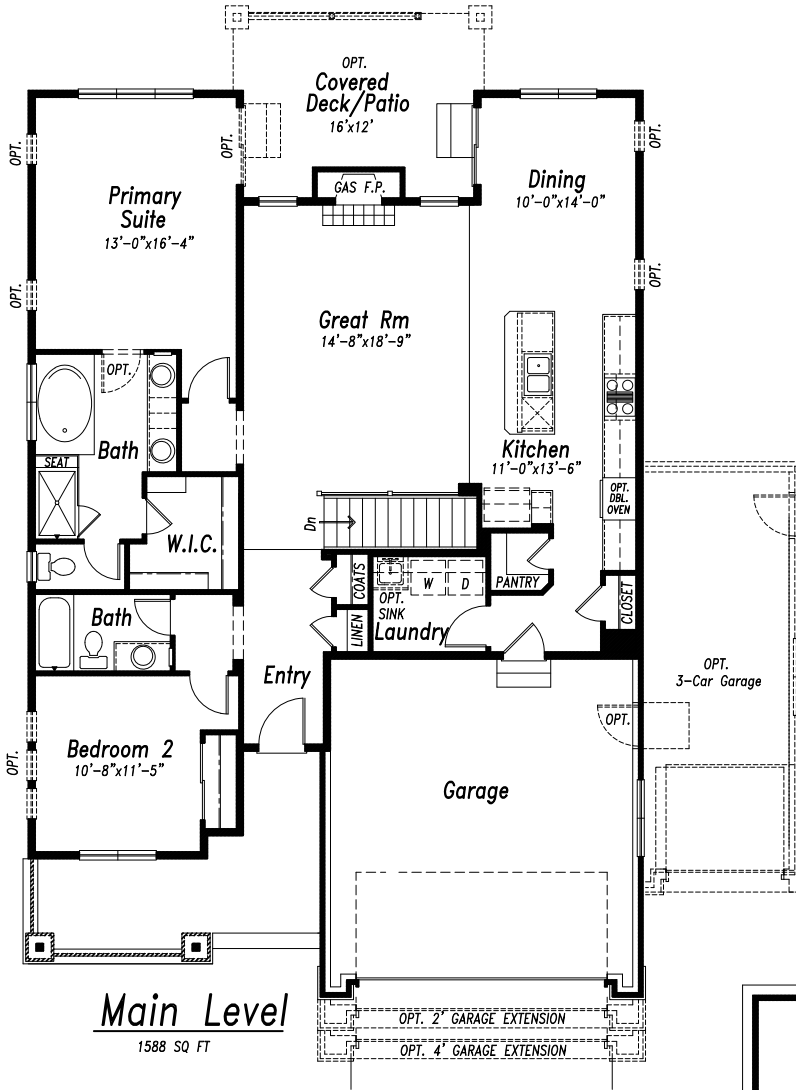
This house is a perennial favorite for good reason! The open-concept great room, kitchen, and dining area create a welcoming gathering space anchored by a stunning floor-to-ceiling stacked stone gas fireplace with wood mantel. A chef's dream, the kitchen features a 36" commercial gas range, stainless-steel KitchenAid refrigerator and wall oven/microwave appliances, and elegant quartz countertops. High-end finishes abound, from the 8' front and interior doors and under-cabinet lighting to the sophisticated wrought iron stair spindles and pendant lighting. The primary suite offers a true retreat with a luxurious soaking tub and walk-in shower, while the finished basement—boasting 9' ceilings and a custom wine bar—is perfect for entertaining. Step outside to the all-weather covered patio with a built-in gas line for easy grilling, or utilize the oversized 3-car garage with ample room for trucks, tools, and toys. This home perfectly blends functional design with high-end luxury. **The Kirkland Plan, MLS #4965917 READY FOR MOVE-IN!**

*Limited time offer. Some restrictions apply. Buyer Credits total \$58,142 including \$32,500 flex cash. Ask for details and about incentive flexibility.

SINCE 1965
Campbell
HOMES

719-434-7251
cordera@campbellhomes.com





Take a virtual tour at <https://campbellhomes.com/moveinready/10151-waterton-canyon-way/>