



MERIDIAN RANCH

A GOLF & RECREATIONAL COMMUNITY



13039 Monument Vista Dr.

Enjoy
\$20,000
in Flex
Cash*

\$737,861



3,506
Sq. Ft



5
Bedrooms



3
Bathrooms



3-Car
Garage

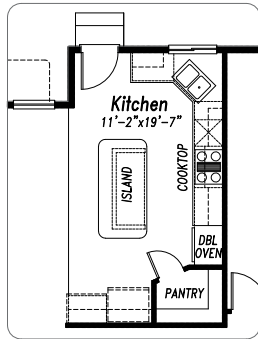
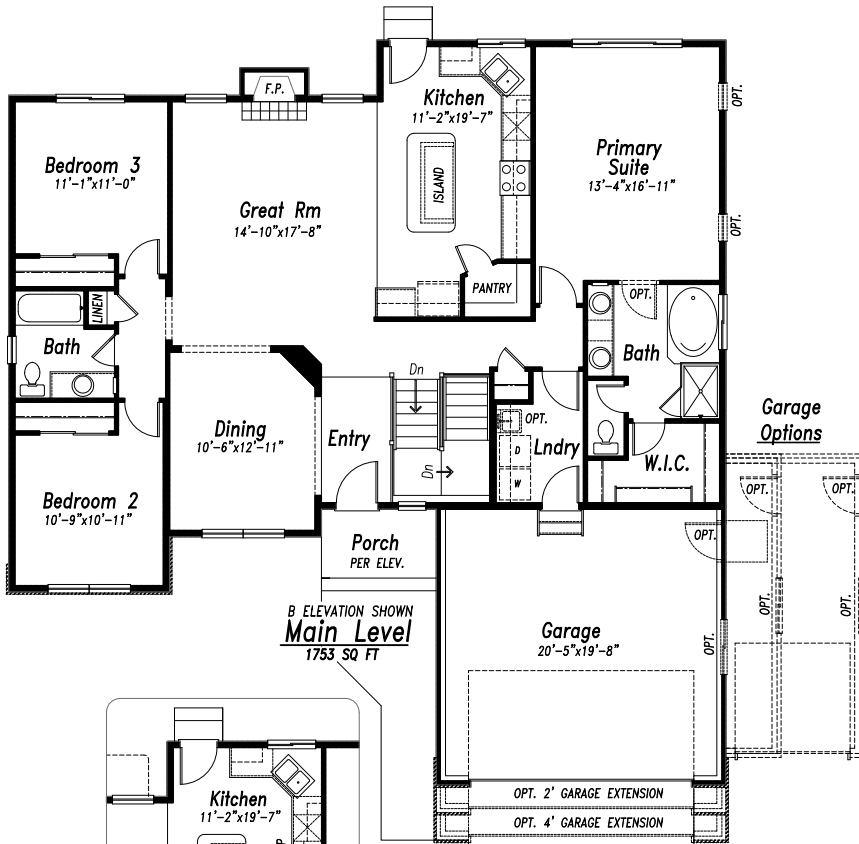


Step into elevated living with this beautifully designed new home featuring **10-foot ceilings on the main level**, luxurious vinyl plank flooring throughout the main living areas, and impressive **8-foot interior and front doors** that enhance the open, airy feel. The **gourmet kitchen** is a chef's dream with a spacious island, walk-in pantry, gas cooktop, and double ovens—perfect for entertaining. The great room boasts a stunning stacked-stone fireplace extending to the ceiling, accented by a rich stained box mantel. Retreat to the primary suite featuring a soaking tub and Euro glass-enclosed walk-in shower. Downstairs, the **finished basement with 9-foot ceilings**, offers a cozy second fireplace, and a stylish wine bar. Relax outdoors on the **extended covered patio** with a built-in gas line, ready for your BBQ. *The Monarch Plan. Estimated completion: July 2026. Note: Photos are of the plan and not the specific property. *Flex cash requires use of preferred lender if financing and is part of an overall promotion value of over \$49,000! Ask for details.*

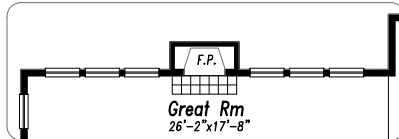


719-418-3969
meridianranch@campbellhomes.com

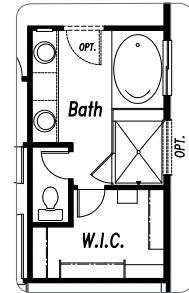




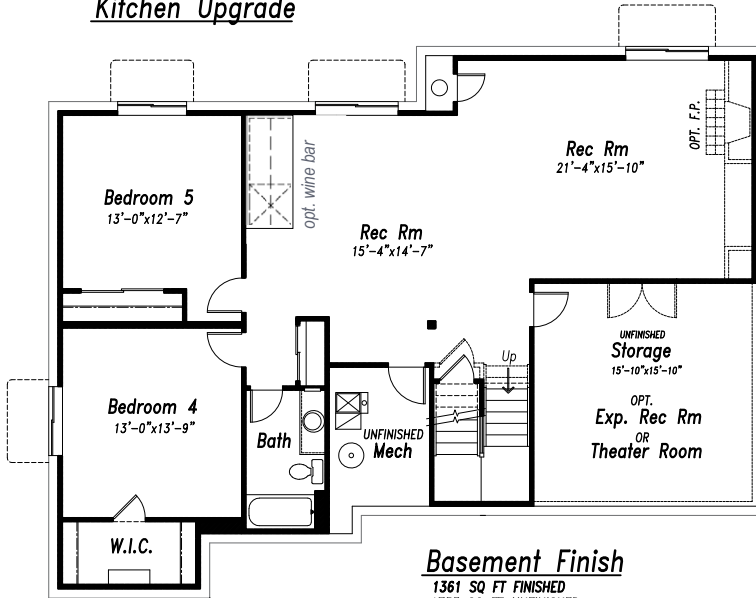
Kitchen Upgrade



Optional Extended Great Room



Optional Primary Bath & Walk-In Closet



Basement Finish

1361 SQ FT FINISHED
1753 SQ FT UNFINISHED