



MERIDIAN RANCH

A GOLF & RECREATIONAL COMMUNITY



**\$35,000
Flex Cash***
Total buyer credits
over \$44,000

13051 Monument Vista Drive

\$644,825



 **2,680
Sq. Ft**

 **5
Bedrooms**

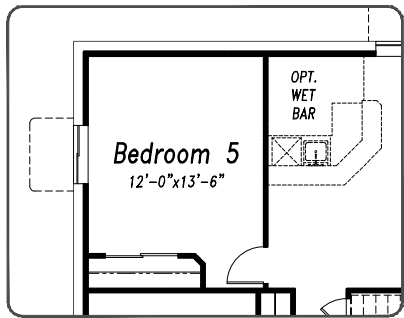
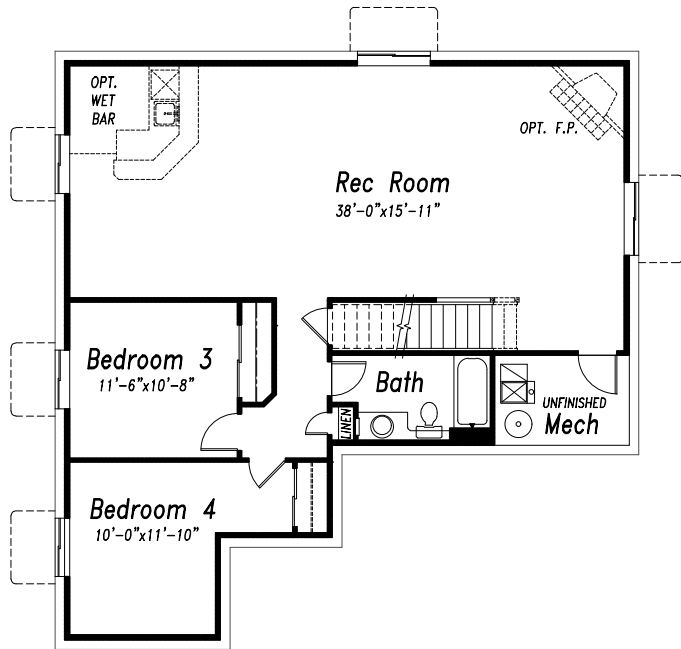
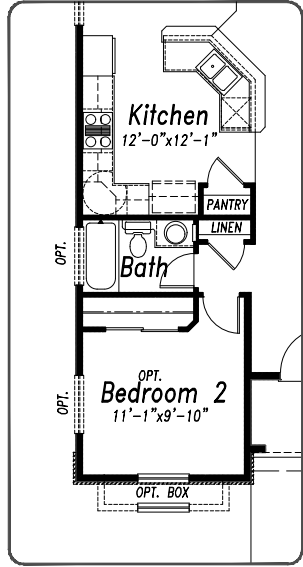
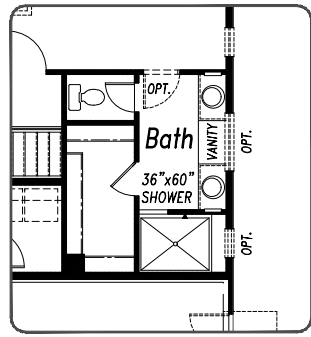
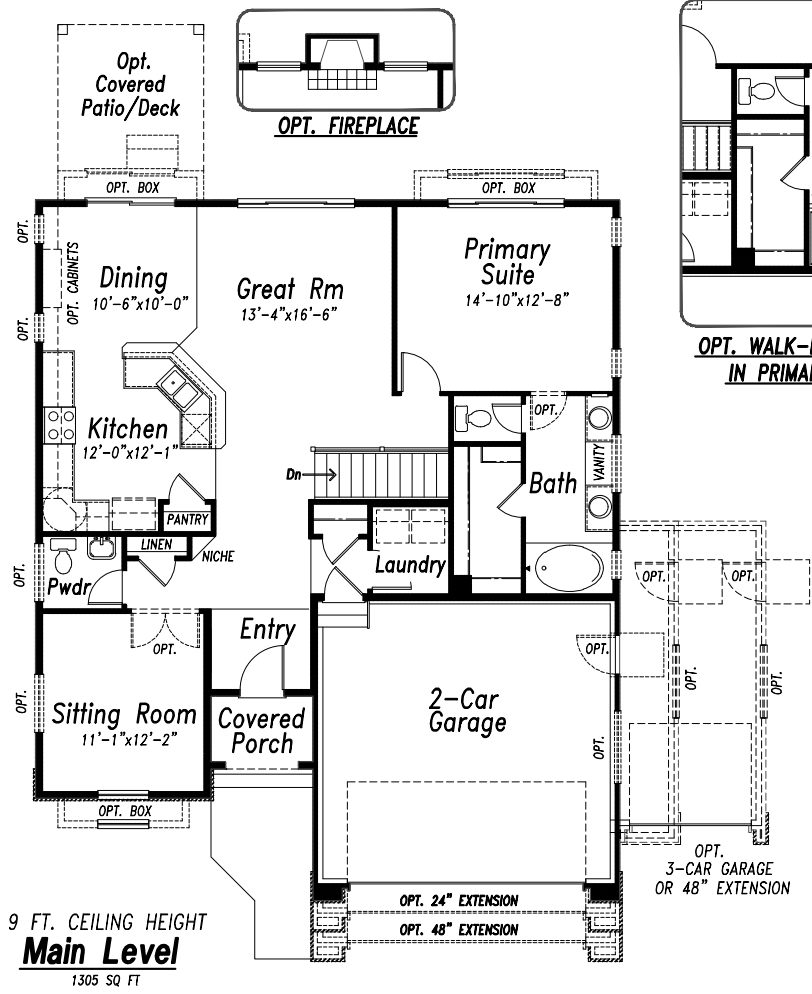
 **3
Bathrooms**

 **3 Car
Garage**



Beautiful Craftsman ranch-style home with an open, inviting layout. The gourmet kitchen shines with a 30" gas cooktop, double ovens, microwave, upgraded dishwasher, and a spacious breakfast bar. A charming dining nook with a box window and extended cabinetry opens to a 20' x 15' patio complete with an installed gas line—perfect for effortless outdoor grilling. The great room is anchored by a stunning gas fireplace with floor-to-ceiling stacked stone and a stained wood mantel. The main level features a serene primary suite with a large walk-in shower, plus a second bedroom and full bath. Downstairs, the finished basement offers 9' foundation walls, a rec room with wet bar, three additional bedrooms, and a full bath. Luxury vinyl plank flooring throughout the main living areas adds warmth, durability, and timeless elegance. The oversized 3-car garage offers plenty of space for longer vehicles, toys or tools. [Augusta Plan. #7536128](#) Exterior image virtually landscaped.

**Limited time offer. Some restrictions apply. Buyer Credits total \$44,100 including \$35,000 flex cash. Ask for details and about incentive flexibility.*



Basement Finish

1205 SQ FT FINISHED
 1305 SQ FT UNFINISHED